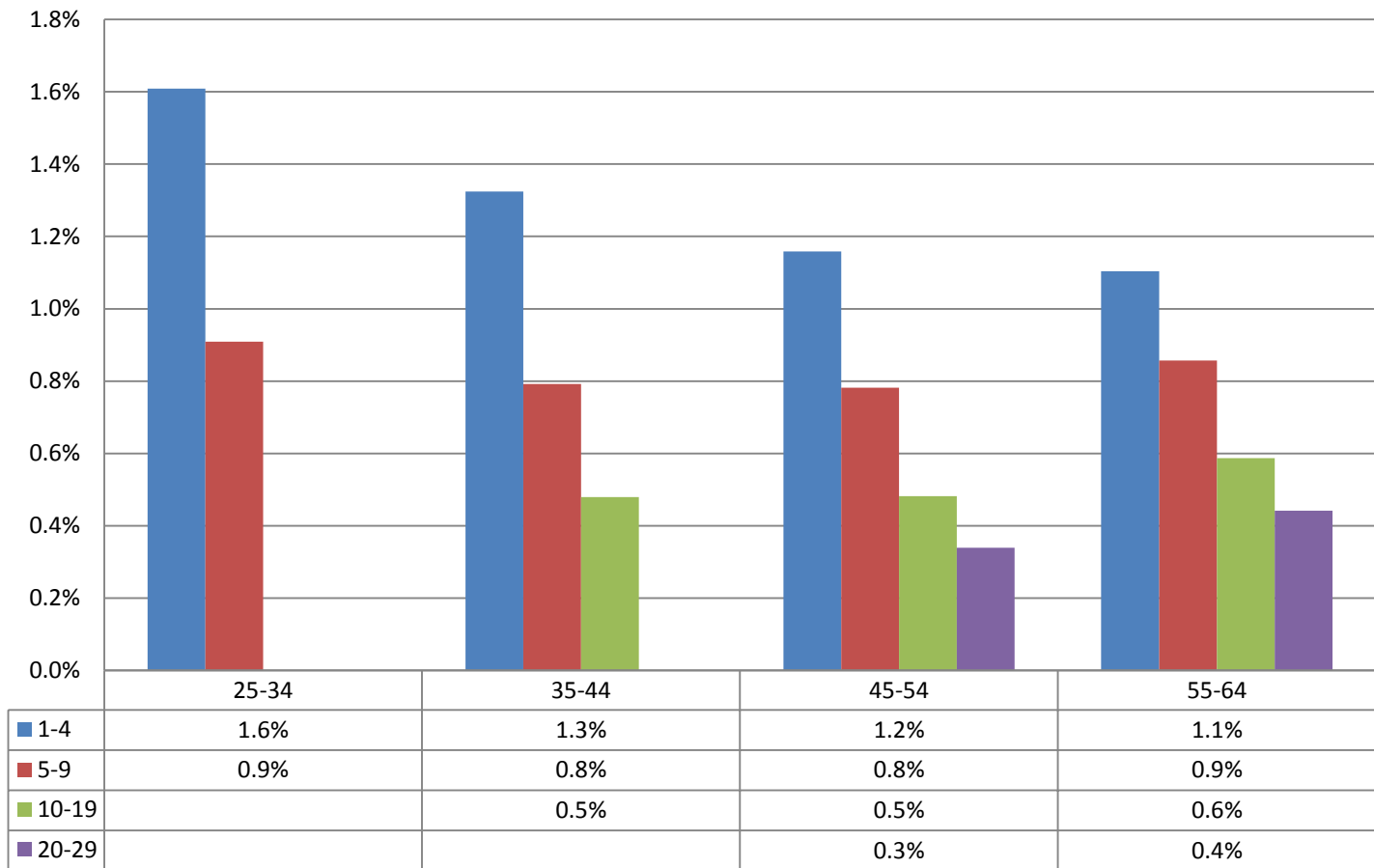


Monthly Change In Average Account Balances (by Age and Tenure) for February 2016 Among Consistent 401(k) Participants with Account Balances as of December 31, 2013



**Years of Tenure with
Current Employer**

Age

Sources: 2013 Account Balances: Tabulations from EBRI/ICI Participant-Directed Retirement Plan Data Collection Project; 2015 and 2016 Account Balances: EBRI estimates. The projection is based on all participants with account balances at the end of 2013 and contribution information for that year.