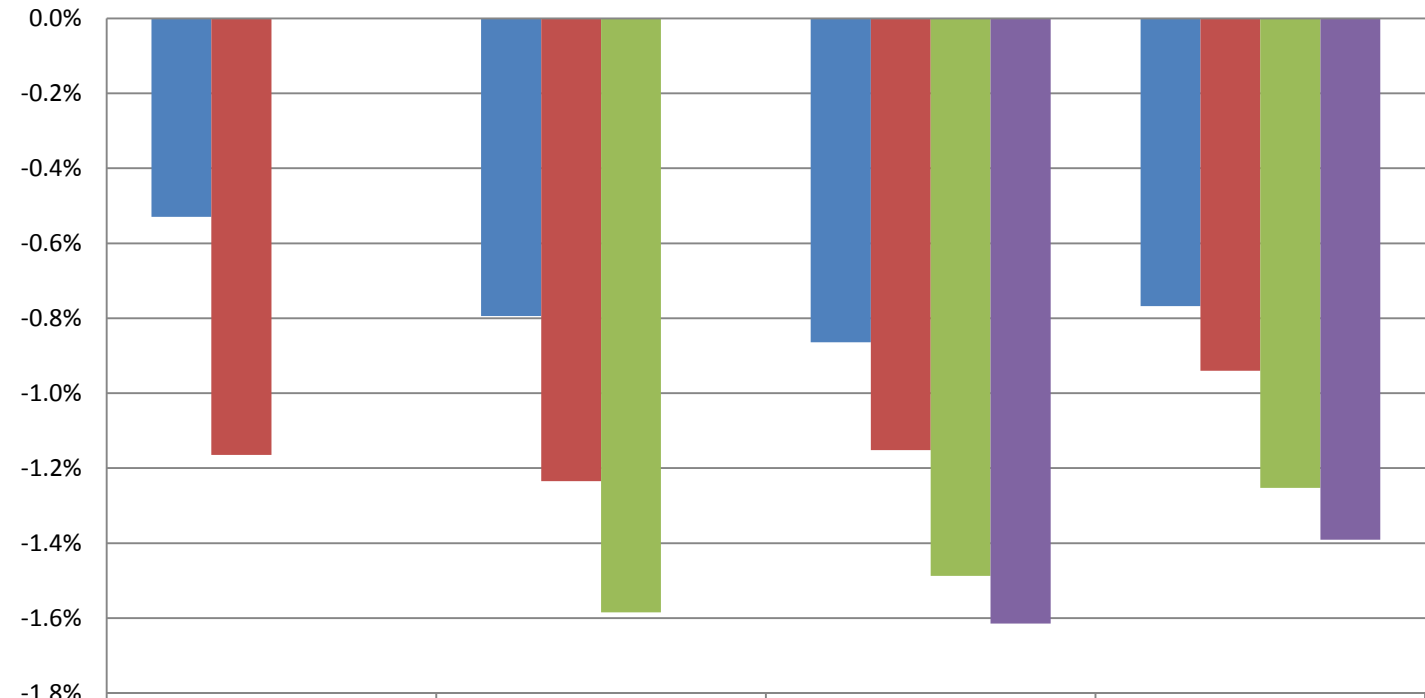


## Monthly Change In Average Account Balances (by Age and Tenure) for September 2014 Among Consistent 401(k) Participants with Account Balances as of December 31, 2012



	25-34	35-44	45-54	55-64
■ 1-4	-0.5%	-0.8%	-0.9%	-0.8%
■ 5-9	-1.2%	-1.2%	-1.2%	-0.9%
■ 10-19		-1.6%	-1.5%	-1.3%
■ 20-29			-1.6%	-1.4%

**Years of Tenure with Current Employer**

**Age**

Sources: 2012 Account Balances: Tabulations from EBRI/ICI Participant-Directed Retirement Plan Data Collection Project; 2014 Account Balances: EBRI estimates. The projection is based on all participants with account balances at the end of 2012 and contribution information for that year.