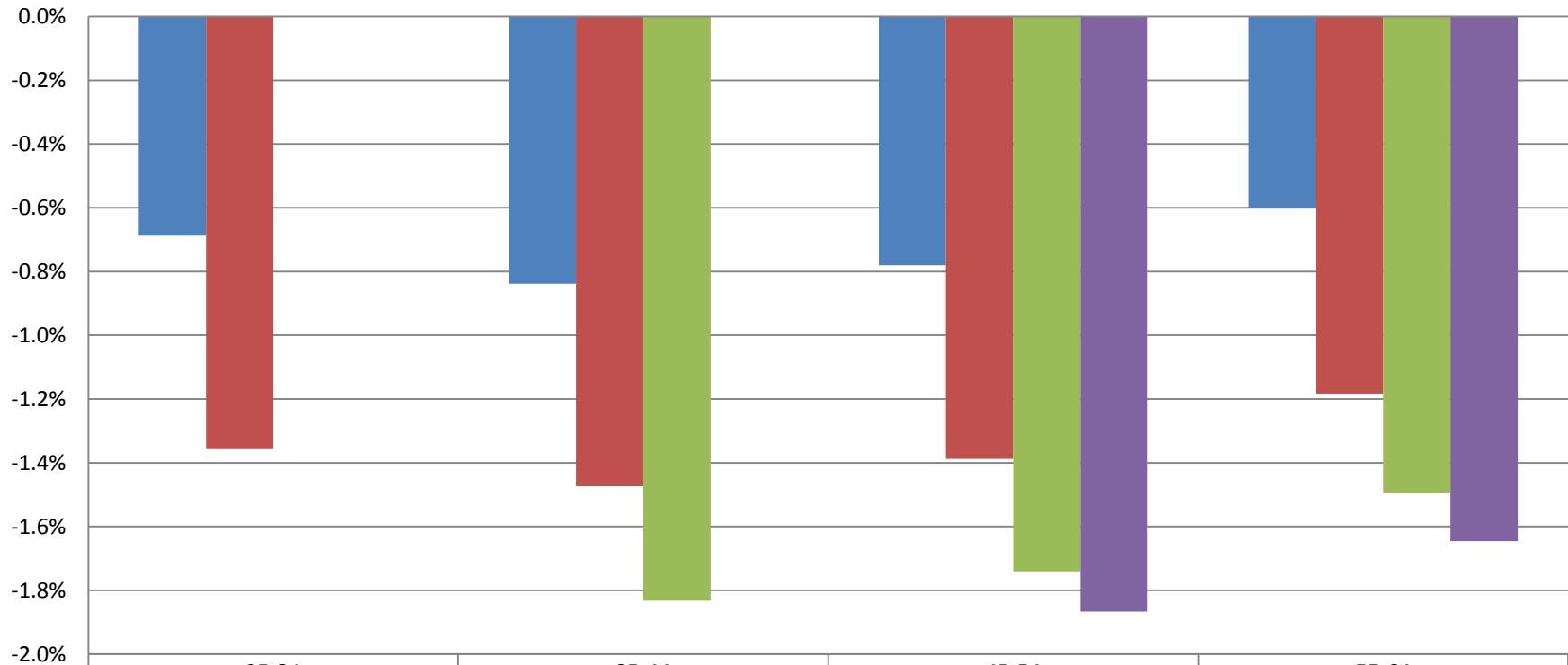


## Monthly Change In Average Account Balances (by Age and Tenure) for August 2013 Among Consistent 401(k) Participants with Account Balances as of December 31, 2011



	25-34	35-44	45-54	55-64
■ 1-4	-0.7%	-0.8%	-0.8%	-0.6%
■ 5-9	-1.4%	-1.5%	-1.4%	-1.2%
■ 10-19		-1.8%	-1.7%	-1.5%
■ 20-29			-1.9%	-1.6%

Sources: 2011 Account Balances: Tabulations from EBRI/ICI Participant-Directed Retirement Plan Data Collection Project; 2013 Account Balances: EBRI estimates. The projection is based on all participants with account balances at the end of 2011 and contribution information for that year.