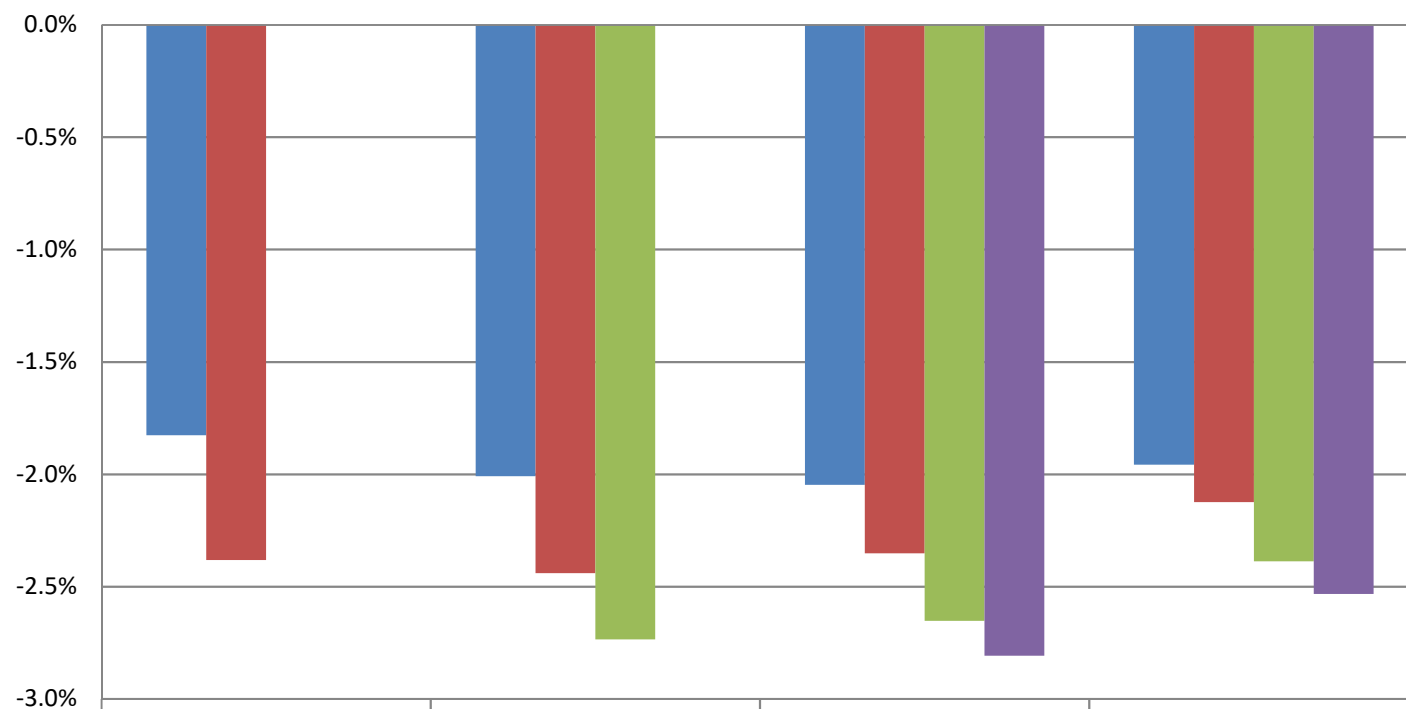


Monthly Change In Average Account Balances (by Age and Tenure) for February 2018 Among Consistent 401(k) Participants with Account Balances as of December 31, 2015



	25-34	35-44	45-54	55-64
■ 1-4	-1.8%	-2.0%	-2.0%	-2.0%
■ 5-9	-2.4%	-2.4%	-2.4%	-2.1%
■ 10-19		-2.7%	-2.7%	-2.4%
■ 20-29			-2.8%	-2.5%

Years of Tenure with Current Employer

Age

Sources: 2015 Account Balances: Tabulations from EBRI/ICI Participant-Directed Retirement Plan Data Collection Project; 2018 Account Balances: EBRI estimates. The analysis is based on all participants with account balances at the end of 2015 and contribution information for that year.

NB: these numbers should not be compared to the previous time series using 401(k) participants from 2014 due to changes in the composition of the data base.