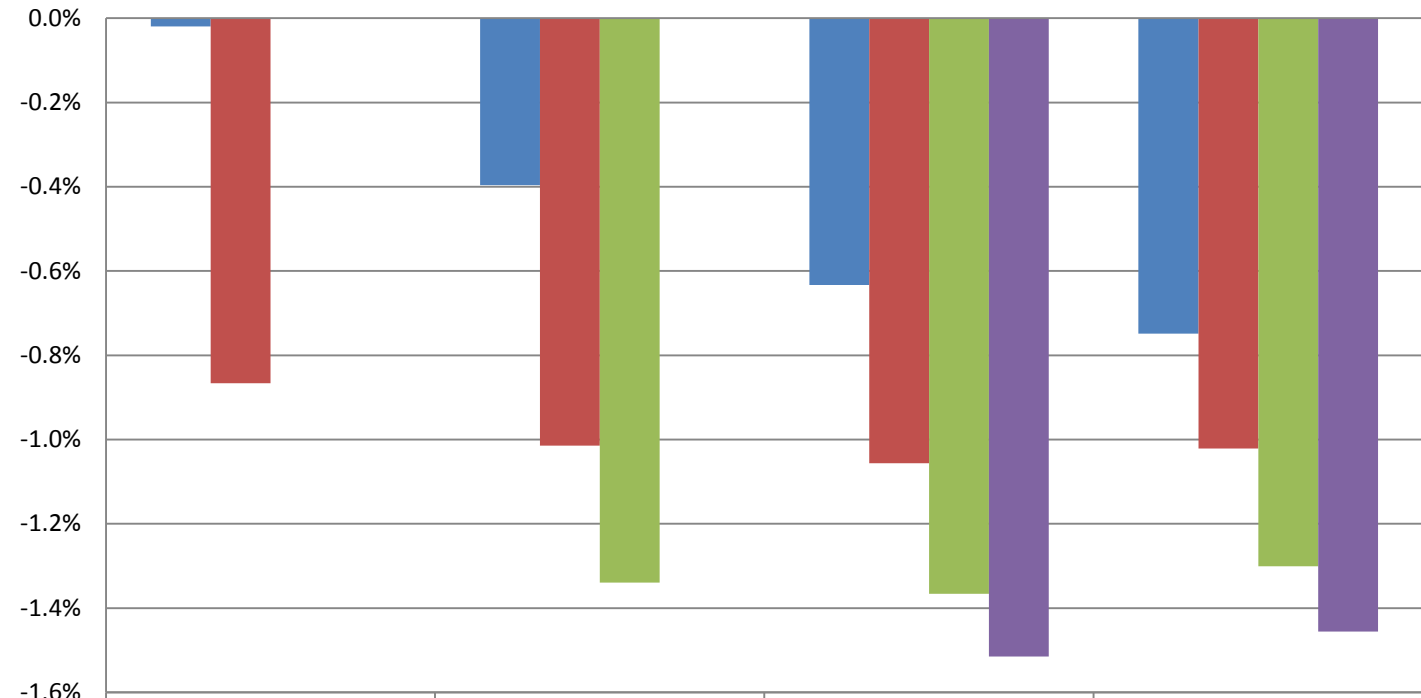


## Monthly Change In Average Account Balances (by Age and Tenure) for June 2015 Among Consistent 401(k) Participants with Account Balances as of December 31, 2013



	25-34	35-44	45-54	55-64
1-4	0.0%	-0.4%	-0.6%	-0.7%
5-9	-0.9%	-1.0%	-1.1%	-1.0%
10-19		-1.3%	-1.4%	-1.3%
20-29			-1.5%	-1.5%

**Years of Tenure with Current Employer**

**Age**

Sources: 2013 Account Balances: Tabulations from EBRI/ICI Participant-Directed Retirement Plan Data Collection Project; 2015 Account Balances: EBRI estimates. The projection is based on all participants with account balances at the end of 2013 and contribution information for that year.